

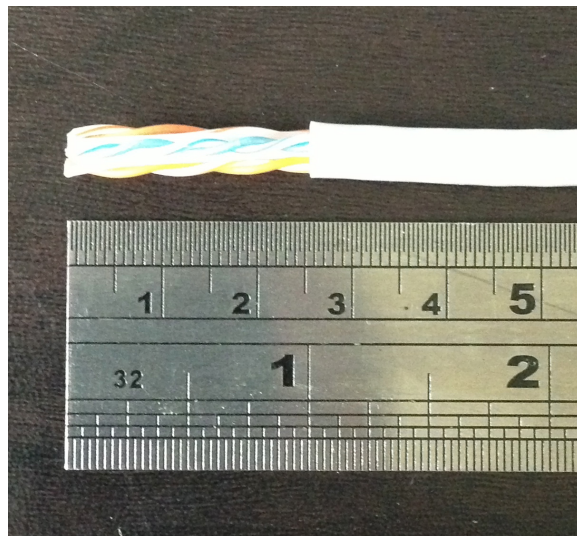


Category 6 (U/UTP) - RJ45 Keystone Jack Termination Guide

(This Guide is not for termination of KH-Max RJ45 Jacks)

Step 1:

Using a Cable Stripper, (or blade) strip 25mm of the cable jacket off exposing the pairs. It is important to make sure that the cable stripper is adjusted properly so as to only score the outer jacket of the cable, to make removing it easier. It is important not to cut the outer sheath of the twisted pairs as this will cause the wire to break or short out the cable connection at a later stage. It is important to inspect all cable pairs for damage before proceeding to the next step.



Step 2:

Remove the outer jacket of the cable. After the outer jacket is removed, straighten out the four pairs completely and remove the inner plastic t separator.

Step 3:

Now lay the pairs over the top of the keystone jack noting the color pattern for the TIA/EIA 568A wiring standard. ANSI/TIA/EIA-570-B "Residential Telecommunications Cabling Standards" recommends T568A

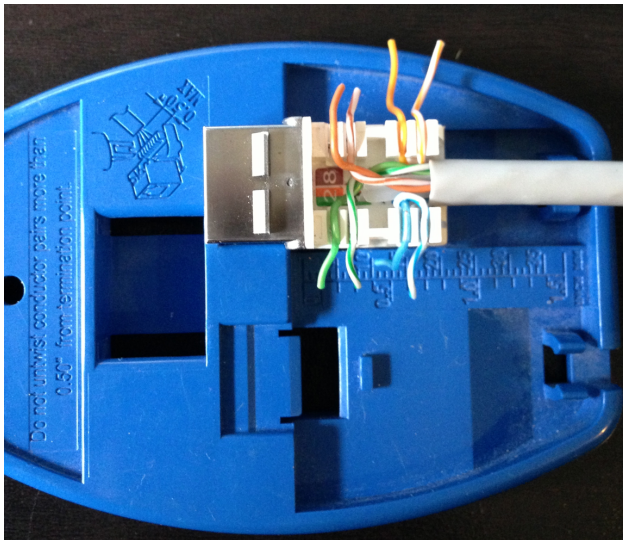


Step 4:

Do NOT fully untwist the pairs, and ensure that the cable jacket is positioned as close to the end of the jack as possible. Some installers use a "pick" to hold the keystone jack and cable.

Step 5:

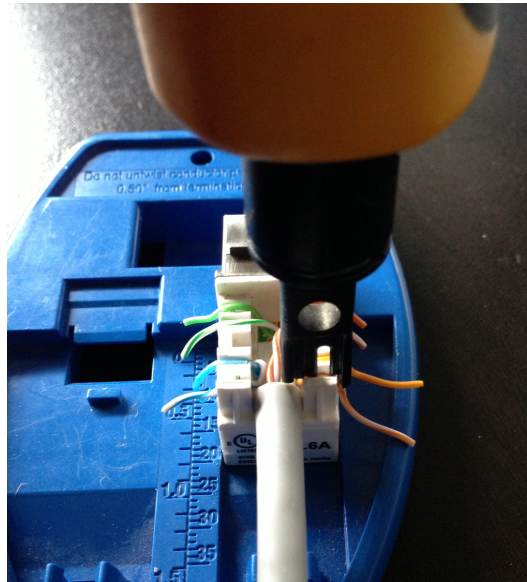
Keeping the pairs as twisted as possible press the wire into the correct groove (referred to as IDC Connector) with your thumbs. If you completely straighten the wires to put them through the jack you will risk "cross talk" between the pairs.





Step 6:

Using a punch down tool, punch the wires down into the groves (referred to as blades) built into the keystone jack. Make sure the blade (as noted in the picture) is facing the outside of the keystone jack. The punch down tool should cut off the remaining pieces of the wire on the outside, but sometimes you may need to punch them down a 2nd time for the wire to be cut.





Step 7:

Once the cable is cut off you can install the Wiring cap of the keystone jack. This wiring cap helps to protect the connection from dust, dirt and the cable is also held in the blade slightly better. The covers should never be used to do the job of the punch down tool.

